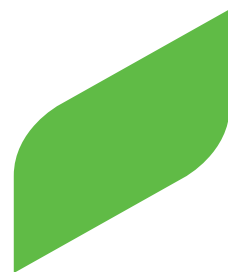


EXPERTS FOR GROWTH



**COMPO
EXPERT®**

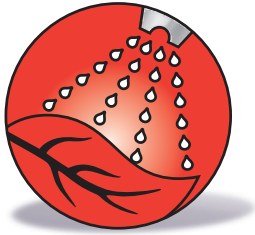
Basfoliar® SP

Water soluble fertilizer for foliar application

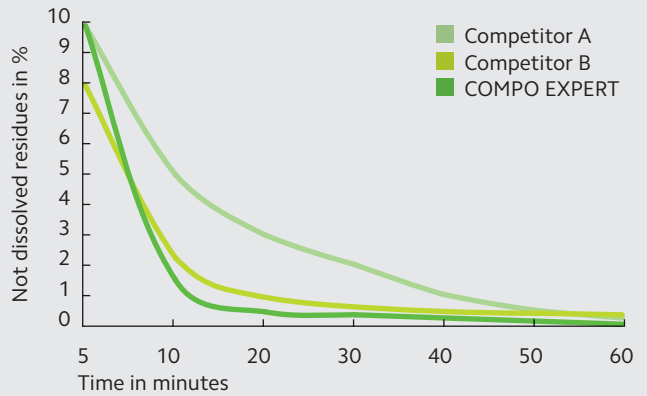
Basfoliar® SP

High solubility

- 99% of the products dissolve within 10 minutes
- Superior dissolving speed and efficiency
- Virtually no residues



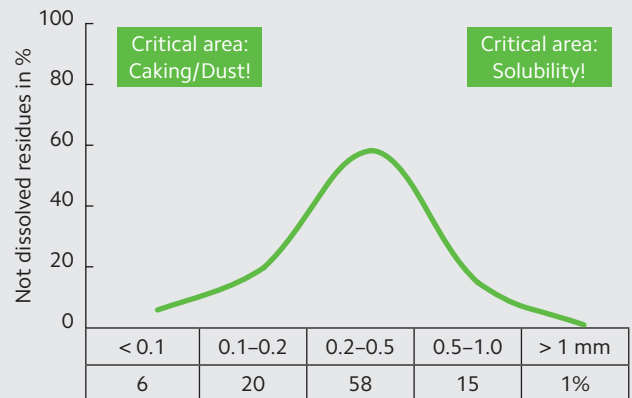
Basfoliar® SP dissolving curve



Superior quality

- Better quality than standard products due to specific grinding technique and high quality raw materials
- Homogeneous particle size
- No product segregation
- Reduced caking risk and dust
- Chelated set of trace elements

Particle distribution in Basfoliar® SP



The importance of availability

According to Liebig’s Law of the Minimum, any essential plant nutrient which is not in sufficient supply limits crop yield.

Law of the minimum:

The element which is in shortest supply (in this case K) limits the yield. (J. v. Liebig 1803–1873)



Principle of chelatisation

Unchelated

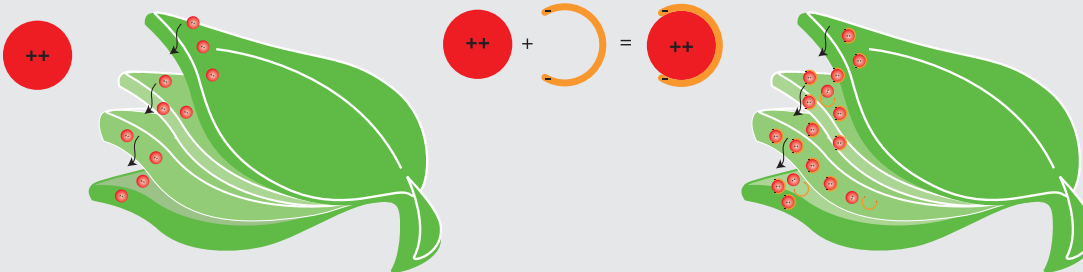
Ions of metallic micro nutrients are positively charged
Mn⁺⁺, Fe^{++/+++}, Cu⁺⁺, Zn⁺⁺
(Sulphates, Oxides and others)

Chelated

The “Chelator” (from Greek ‘Chelon’ = crab claw) binds the metallic ion by enclosing it. The ion is now protected from precipitation due to environmental exposure or uncertainties (e. g. high pH)

Advantages chelatisation

- Rapid leaf penetration
- Highly efficient nutrient uptake
- Full utilization in plant metabolism
- Enhanced translocation to place of demand



General benefits

- Maximum gain of yield potential
- Crop strengthening under stress situations (pests & diseases, extreme climatic conditions etc.)
- Most efficient nutrient application under adverse soil conditions (high pH, salinity, low nutrient content, light soils etc.)
- Optimal supplement to traditional soil fertilization



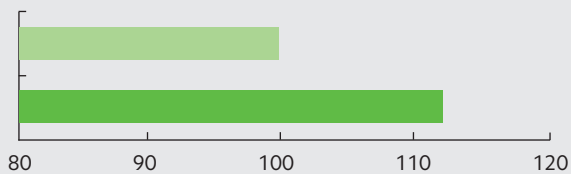
Trial results (yield increase in %)

■ control ■ Basfoliar® SP

Rice:

(Source: BASF Colombia)

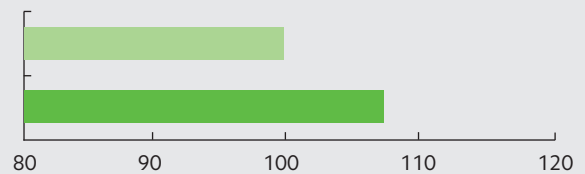
4 applications of Basfoliar® SP 2 l/ha



Wheat:

(Source: BASF Germany)

3 applications of Basfoliar® SP 3,5 l/ha



Potatoes:

(Source:

Schmitt Germany 1973) 6 trials

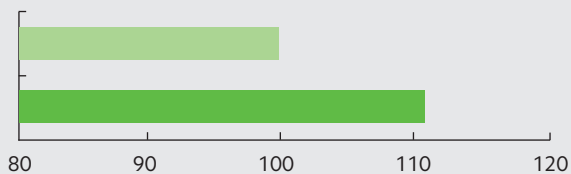
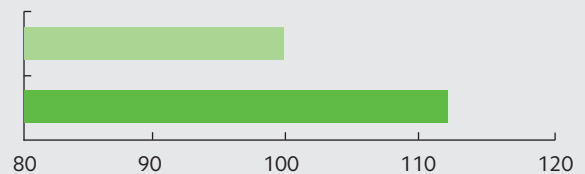


Table grapes:

(Source: BASF Brasil)

6 applications of Basfoliar® SP 3 l/ha





Guaranteed nutrient contents %

% Nutrient Contents	Total Nitrogen	Ammonium (NH ₄ -N)	Nitrate (NO ₃ -N)	Urea (NH ₂ -N)	Phosphate (P ₂ O ₅)	Potassium (K ₂ O)	Magnesium (MgO)	Sulfur Trioxide (SO ₃)	Boron	Copper	Iron	Manganese	Molybdenum	Zinc
Product														
15-30-15	15	5.8	2	7.2	30	15	-	7.5	0.03	0.03	0.08	0.07	0.002	0.03
20-19-19	20	4	5.5	10.5	19	19	-	1	0.01	0.04	0.10	0.10	0.003	0.04
25-10-17	25	3.6	5.0	16.4	10	17	-	5.7	0.01	0.02	0.05	0.05	0.001	0.02
20-5-10	20	13	7	-	5	10	2	27	0.01	0.02	0.05	0.05	0.001	0.02
7-12-40	7	1.5	5.5	-	12	40	-	16.3	0.01	0.02	0.05	0.05	0.001	0.02
13-40-13	13	8.6	4.4	-	40	13	-	-	0.01	0.02	0.05	0.05	0.001	0.02

Basfoliar® SP	15-30-15	20-19-19	30-10-10	25-10-17	20-5-10	7-12-40	15-5-30	13-40-13	
ph									
Concentration in g/100 ml	0.2 10.0 17.5	5.91 5.30 4.83	4.95 4.35 4.22	5.61 5.84 5.11	5.43 4.94 4.67	5.02 4.18 4.02	3.76 2.95 2.91	4.69 4.09 3.92	3.82 3.02 2.95

Basfoliar® SP product range

	Product	Composition	Characteristics	Packaging	
	Basfoliar® Bloom SP	15-30-15 (+7.5 SO ₃ +TE)	- High P content - Poor in chloride - incl. B, Cu, Fe, Mn, Mo, Zn - EDTA chelated metallic micro nutrients	1 kg bags 5 kg bags 25 kg bags	Pallet size: 48 x (15 x 1kg) 36 x (3 x 5kg) 48 x 25 kg
	Basfoliar® 20-19-19 SP	20-19-19 (+TE)	- Balanced nutrient ratio - Poor in chloride - incl. B, Cu, Fe, Mn, Mo, Zn - EDTA chelated metallic micro nutrients	1 kg bags 25 kg bags	Pallet size: 48 x (15 x 1kg) 48 x 25 kg
	Basfoliar® 25-10-17 SP	25-10-17 (+5.7 SO ₃ +TE)	- Poor in chloride - incl. B, Cu, Fe, Mn, Mo, Zn - EDTA chelated metallic micro nutrients	25 kg bags	Pallet size: 42 x 25 kg
	Basfoliar® Olivo SP	14-5-28 (+2 MgO+5 SO ₃ +TE)	- High K content - High B content - Poor in chloride - Incl. Cu, Fe, Mn, Mo, Zn - EDTA chelated metallic micro nutrients	5 kg bags 12 kg bags	Pallet size: 36 x (3 x 5 kg) 50 x 12 kg
	Basfoliar® Primavera SP	25-10-17 (+3.8 SO ₃ +TE)	- Poor in chloride - Incl. B, Cu, Fe, Mn, Mo, Zn - EDTA chelated metallic micro nutrients	5 kg bags 12 kg bags	Pallet size: 36 x (3 x 5 kg) 50 x 12 kg
	Basfoliar® Fruit SP	7-8-34 (+4 MgO+23.6 SO ₃ +TE)	- High K content - Poor in chloride - Incl. B, Cu, Fe, Mn, Mo, Zn - EDTA chelated metallic micro nutrients	5 kg bags 12 kg bags 25 kg bags	Pallet size: 36 x (3 x 5 kg), 50 x 12 kg 48 x 25 kg
	Basfoliar® Inicial SP	26-10-10 (+3 MgO+8.2 SO ₃ +TE)	- High N content - Poor in chloride - Incl. B, Cu, Fe, Mn, Mo, Zn - EDTA chelated metallic micro nutrients	5 kg bags 12 kg bags 25 kg bags	Pallet size: 36 x (3 x 5 kg) 50 x 12 kg 42 x 25kg
	Basfoliar® Complete SP	20-20-20 (+2.8 SO ₃ +TE)	- Balanced nutrient ratio - Poor in chloride - Incl. B, Cu, Fe, Mn, Mo, Zn - EDTA chelated metallic micro nutrients	2 kg bags 5 kg bags	Pallet size: 32 x (10 x 2 kg) 36 x (3 x 5 kg)

For detailed information on application data please get in touch with your local supplier.

Further products: Basfoliar® SP

8-12-24 (+4 MgO+31 SO₃+TE)

20-5-10 (+2 MgO+27 SO₃+TE)

10-20-30 (+2 MgO+4 SO₃+TE)

30-5-10 (+3 MgO+7.25 SO₃+Mn+Zn)

20-10-20 (+2 MgO+8.5 SO₃+TE)

10-30-20 (+17.5 SO₃+0.6 B+0.5 Mo)

7-12-40 (+16.3 SO₃+TE)

15-5-30 (+1 MgO+12.5 SO₃+TE)

13-40-13 (+TE)

19-19-19 (+2.8 SO₃+TE)